

**Production Features**

Spacious 3 Tier Production Area with seating for eleven
74 - Video monitors at Front Production Desk
2 - 8" Video monitors at the Second Production Desk
2 - 8" Video monitors at the Third Production/Chyron Desk

Video

Grass Valley Kalypso Digital Switcher
80 Input, 48 Outputs, Clip cache, 6 Transform engines
Accom Dual Twin DVEous
Codi Telestrator

Cameras (16:9 Switchable)

Wired for 12 Cameras
5 - Sony BVP 900 Digital Studio Cameras
3 - Sony BVP E-30 Digital Handheld Cameras
1 - Sony BVP 70 Handheld Camera
4 - Fujinon 70 X Lenses with Servo Zooms
2 - Fujinon 55 X Lenses 1- with Servo Zooms
3- Fujinon 22 X Lenses
1- Fujinon 18 X Lense
1 - Studio Build Up Kits
2 - LPS/Clock Cameras
8 - Vinton Heads
1 - Sachtler Video 25 Head
2- Cartoni Omega Heads

VTR

Wired for 2- EVS and 7 VTR's
1 - 6 Channel EVS LSM XT
1- EVS X-File Digital Archive Station
1 - 2 Channel Omega Fast Forward DDR with Lance
2 - Sony DVW 500 Digibeta
4 - Sony BVW 75 Beta SP
6 - DNF Slo-Mo Controllers
2 - DVD VHS combo players
2 - DVD Player/Recorder
43 - Video monitors in VTR/EVS Area

Routing

N-Vision 96x64 SDI
BTS Venus 48 X 32 analog (monitoring)
22 - Single buss 48 button controllers with breakaway
3 - X/Y controller with expansion panel

Graphics

Chyron SDI Duet LEX with clip player

Terminal

13 - DPS Frame Syncs (6- Digital, 7- Analog)
110- Leitch SDI Video DA's
103 - Grass Valley Analog Video DA's
Grass Valley Sync Generators

Audio

Yamaha PM-4000 56 input audio Mixer with 48 mono
4 Stereo Inputs, 8 VCA, 8 Groups, 8 Aux, 8 Matrix
60 - Audio D/A's
2 - 360 Systems Digicart E
1 - Roland Digital Audio Replay
1 - CD Player
6 - DBX 160X series compressors/limiter
2 - DBX 166 series stereo compressors/limiter
1 - Lexicon PCM-70 Effects/Delay
6 - Sennheiser HMD-25 Commentator Headsets
2 - Big Ear Parabs (by request)
5 - Sennheiser ME 66 Shotguns
4 - Sennheiser ME 67 Shotguns
11 - EV Hand Mic (2-RE-11, 2- RE-16, 5 RE-50, 2- 635)
5 - Sony ECM 55 Lav mic
2 - FishPoles with Shure FP-22 (by request)
10 - Video monitors in Audio

Communications

RTS with 12 Powered PL Channels
7 - 803 intercom stations
12 - 2 Channel intercom stations
2 - SAP Source Assign Panel
12 - IFB Channels
12 - Camera Iso System
2 - MCP-325 Speaker Boxes
15 - BP 325 Intercom Beltpacks
8 - IFB Beltpacks
4 - Daltec Announce Boxes

30 - Beyer Headsets (15 Single, 15 Double)
15 - RTS/Telex lightweight Headsets
2 - Telos Links
1 - Gentner DH-20 Hybrids
1 - Gentner SP-3A Hybrids
2 - Gentner Couplers
6 - Motorola 16 Channel UHF Radios
2 - Motorola 16 Channel UHF Base Stations
8 Line telephone system

External Monitors

3 - 13" Color
8 - 9" (5-Color, 3-B/W)
2- 14" LCD

Power

197-270V, 200 amps single or 3 phase
150 ' Camlock

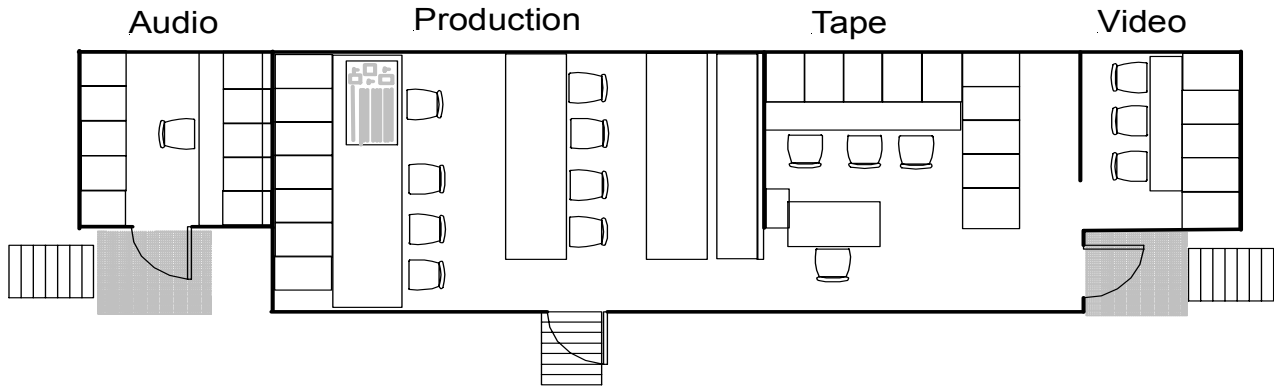
Overall Dimensions

48' AMP Expando Trailer
70' overall Trailer Length with Tractor
Expandable section 30' x 42"
13' 3" height, 12' wide, 80,000 lbs (36,400 kgs)

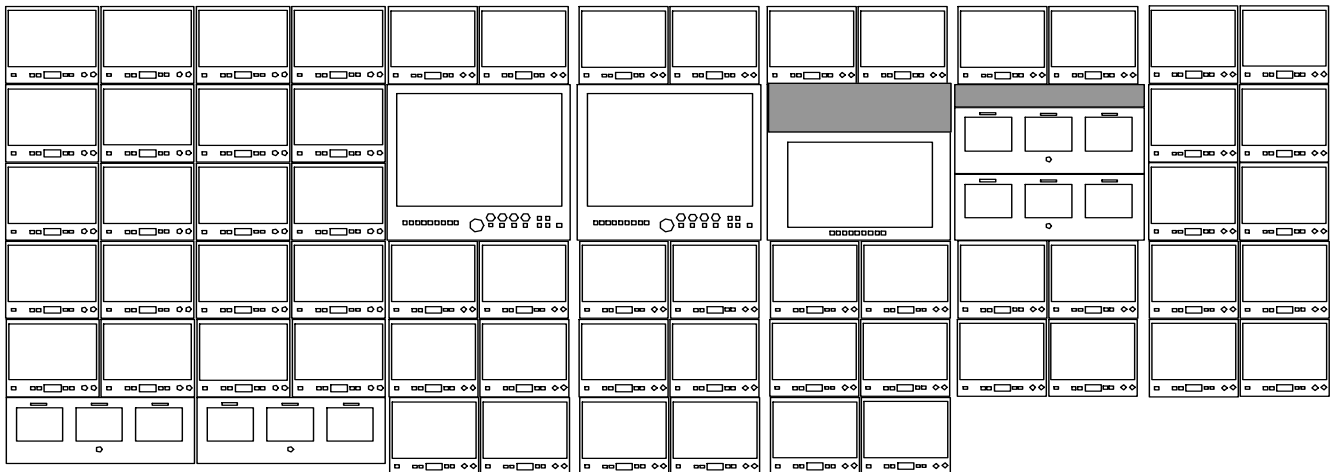


M-2

Layout



Monitor Wall



Director of Business Development
Frank Coll
cell 310-629-0160
fax 310-534-3047
fcoll@miramobile.com
www.miramobile.com

Director of Sales
Steve Meyer
office 503-464-0811
cell 971-563-6387
fax 503-464-0897
smeyer@miramobile.com
www.miramobile.com