



53' HD EXPANDO (Dual Feed)

503-464-0900

M-5HD

Specs as of 1/1/10

Production Features

Spacious 2 Tier Production Area with seating for eight
Isolated Dual Feed Production Area or Graphic Room
with seating for six
114 - Video monitors at Front Production Desk
12 - Video monitors at the Second Production Desk
30 - Video Monitors in the Dual Feed Production Area
10 - Video monitors in the Dual Feed Graphics Area

Video

Thomson-Grass Valley Kalypso HD Digital Switcher
90 input, 4 ME, Internal DVE and Still Store,
4 keyers per ME, 48 Outputs
1 ME Aux Switcher (Dual Feed Production)
Thomson-Grass Valley GVEous MX HD

Camera

Wired for 16 Cameras
10 - Sony HDC-1500 HD Cameras
6 - Sony CA905L Studio Sled with 7" Viewfinder
1 - Studio Build Up Kits (for Handheld Cameras)
2 - Fujinon 87 X Lens with stabilization
4 - Fujinon 72 X Lens
3 - Fujinon 22 X Lens
2 - Fujinon 13 X Wide Angle Lens
6 - Cartoni Omega heads
4 - Cartoni Gamma heads
2 - LPS/Clock Cameras

Media Storage

Wired for 10 VTR's
2 - Sony DVW M2000 Digibeta
2 - Sony BVW 75 Beta SP
1 - 6 Channel EVS LSM XT (2)
1 - 4 Channel EVS LSM XT
2 - 4 Channel HD EVS RO XT
1 - HD Spotbox or 4 Channel HD EVS RO XT
1 - EVS X File Digital Archive Station
2 - 2 Channel Omega Fast Forward DDR with Lance
1 - VHS / DVD Player-Recorder, 2 - DVD +/-R Recorder
4 - DNF Slo-Mo Controllers
43 - Video monitors in VTR, 18 - in the EVS Area

Graphics

Wired for 4 Graphics Units
1 - Chyron HyperX 2
1 - Chyron SDI Duet LEX with clip player
(Duet LEX to be upgraded to HyperX 3 in April 2010)

Routing

Leitch 96 X 96 HD Video
Leitch 128 X 256 SDI Video
Leitch 64 X 64 Audio Router
Leitch 32 X 32 Ch.3/Ch.4 Router
20 - Single buss 32 button controllers with breakaway
16 - Single buss 64 button controllers with breakaway
3 - 4 buss X/Y controller

Terminal

12 - Leitch 3902 HD Frame Syncs
4 - Leitch X-75 HD Frame Syncs
26 - Leitch Up converter, 16 - Leitch Down converter

Audio

1 - Yamaha PM-5000 Mixer 58 inputs (46 mono, 6 Stereo)
1 - Crest 20 input x 4 x 2 x 1 Auxiliary mixer
1 - Yamaha PMD 2000 with 36 Inputs (Dual feed mixer)
2 - 360 Systems Digicart E, 2 - Digicart II w/Zip Drives
2 - Sony CD Player
12 - DBX - 166A series stereo compressors/limiter
4 - DBX - 160A series stereo compressors/limiter
4 - Telos One + One Dual Telephone Hybrids
4 - Gentner DH 30 Hybrids
8 - Sennheiser HMD-25 Commentator Headsets
7 - Daltech Announce Boxes
5 - Sennheiser ME 66 Shotguns
10 - Sennheiser ME 67 Shotguns
6 - MKH-70 Shotguns
4 - EV RE-16 Hand Mic
6 - EV RE-50B Hand Mic
4 - EV 635B Hand Mic
2 - Shure Stereo Mics
8 - Sony ECM 77B Lav mic
5 - Video monitors in Audio

Communications

RTS/Telex ADAM with 80 Ports
14 - KP 32 panels
14 - KP 12 panels
12 - Powered PL Channels
16 - IFB Channels
30 - BP 325 Intercom Beltpacks
12 - 4030 IFB Beltpacks
1 - SAP 1626 Source Assign Panel
4 - TIF921 Dual Telephone Interface
40 - Beyer Headsets (20 Single, 20 Double)
20 - RTS/Telex lightweight Headsets
8 - Motorola UHF Radios
3 - Motorola UHF Base Stations
12 Line Avaya Partner telephone system

External Field Monitors

5 - 14" Color
2 - 14" LCD
6 - 8" Color
6 - 8" B/W

Power

2 - 208V, 200 amps 3 phase
150' Camlock
2 - 10 ton AC with heaters

Overall Dimensions

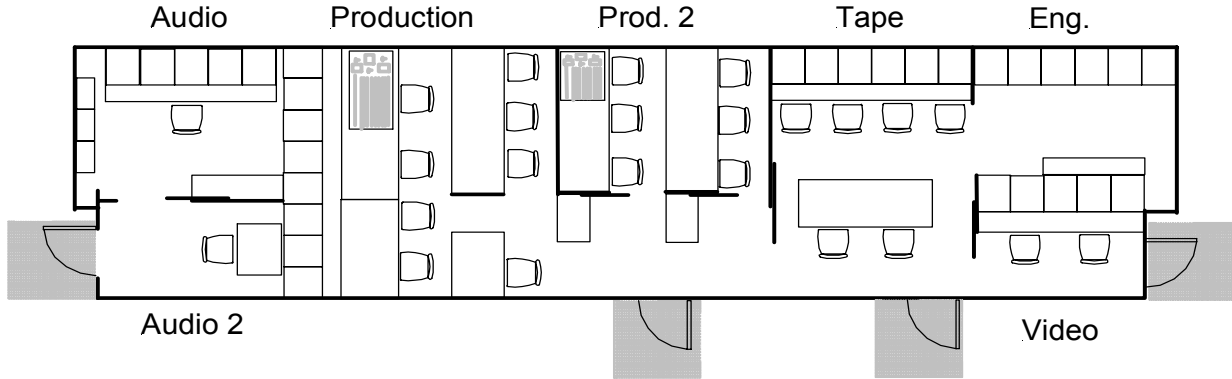
53' AMP Expando Trailer, Expandable section 51' x 60"
57' overall Trailer Length



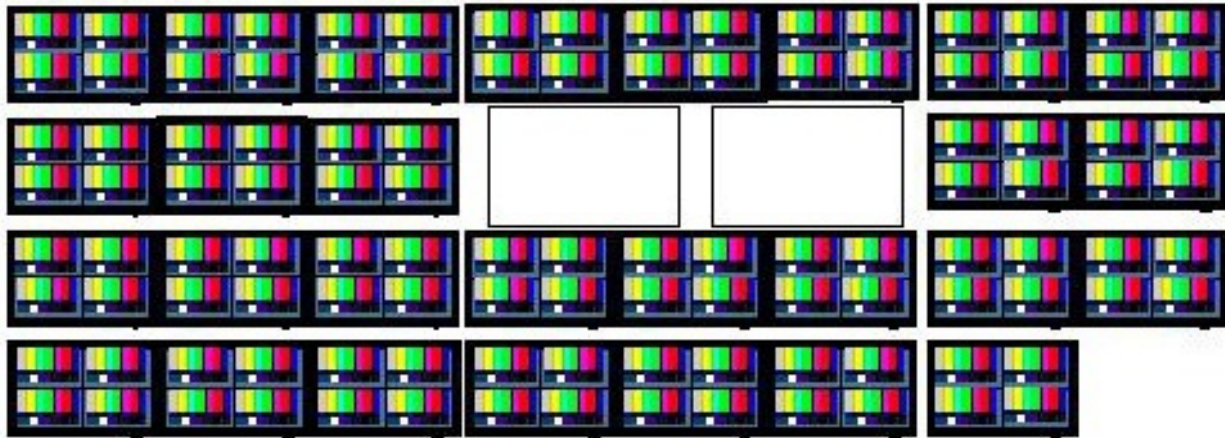
53' HD EXPANDO (Dual Feed) 503-464-0900

M-5HD

Layout



Main Monitor Wall



Dual Monitor Wall

